

RS Open Rack v2



Description

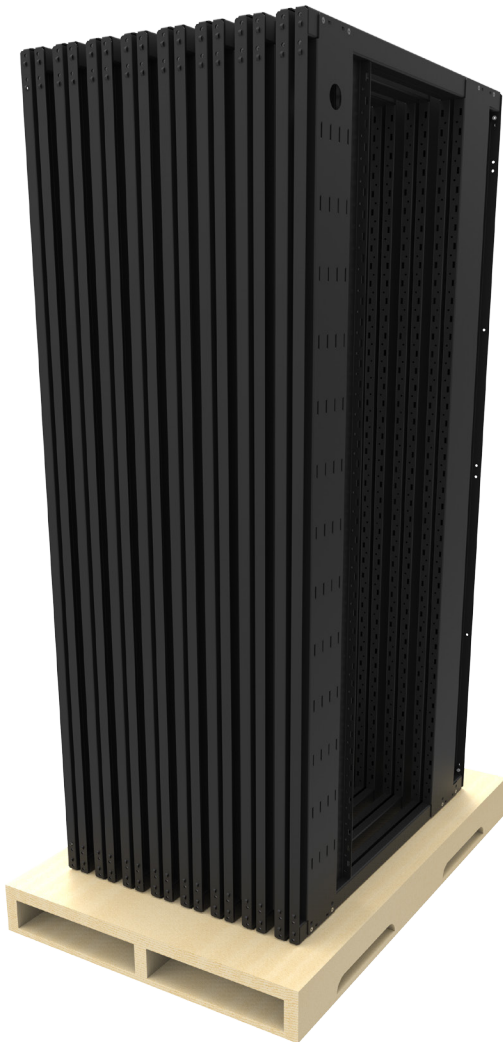
The RS Open Rack v2 features 42OU of space for IT equipment, switches, power shelves and more. The rack can be configured and customized to ship flat or fully assembled with all the accessories to match.

www.RackSolutions.com

Toll Free: (888) 903-7225 | Fax: (903) 453-0808 | Email: info@racksolutions.com

Reseller Agreements - Volume Agreements - Cage Code: 60QH5 - DUNS: 961816423 - Most POs accepted
RackSolutions is a registered trade mark of Rack Solutions, Inc. © Copyright 2014. All Rights Reserved. All other Marks are the property of their respective owners. Patent(s) pending.

Eight on a Pallet



Fully Assembled



Technical Specifications

- Static load capacity: 3,000 lbs.
- Dimensions: 88"H x 23.6"W x 42"D
- 42OU of Mountable Space
- Open Rack Standard v1.2 Compatible
- Durable powder coat finish
- Ships fully assembled or partially assembled
- Built to order. Call for lead time

Accessories

- OCP IT Shelves (2OU)
- Emerson Power Shelf Adapter
- Side Panels
- 4 Hole Top Panel
- 1OU to 1RU Shelf
- 2OU to 2RU Shelf
- 3OU to 3RU Shelf

Need something customized?